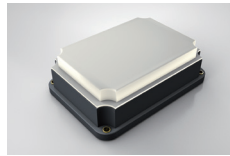


VL-W1

The VL-W1 laser welding system with its unique Panasonic fiber laser technology realizes clean and precise plastic welded joints.



IN Your Future



Information about the laser welding system series VL-W1

Highlights

3D

3D-welding per parallel laser beam



Variable beam diameter



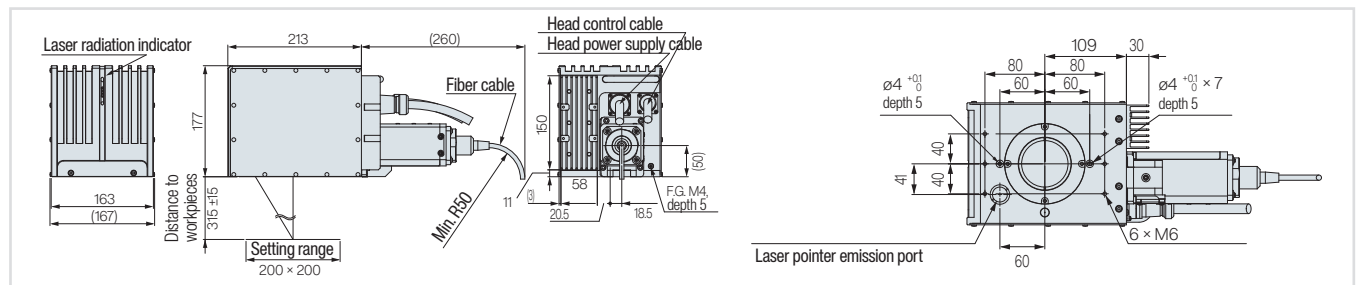
Power correction for curves

Specifications

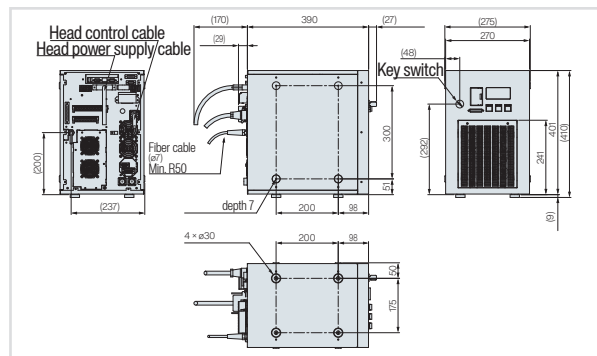
| Item | Model No. | Standard | | Large setting range | |
|---|------------|---|-----------------------|-----------------------|-----------------------|
| | | VL-W1500-N | VL-W1A00-N | VL-W1506-N | VL-W1A06-N |
| Laser output power | | 50W | 100W | 50W | 100W |
| | | Yb fiber laser; $\lambda = 1070\text{nm}$, class 4, CW oscillation | | | |
| Output power at workpiece | | 45W $\pm 5\%$ | 90W $\pm 5\%$ | 45W $\pm 5\%$ | 90W $\pm 5\%$ |
| Guide laser, pointer | | Red semiconductor laser; $\lambda = 655\text{nm}$; class 2 laser: Maximum output 1mW or less | | | |
| Scanner | | Digital galvano scanner | | | |
| Setting range (X, Y) | | 200 \times 200mm | | 400 \times 400mm | |
| Working distance (base position \pm preset range) | | 315 $\pm 15\text{mm}$ | | 685 $\pm 15\text{mm}$ | |
| Scan speed | | Maximum 3000mm/s | | | |
| Supplied cable | | <ul style="list-style-type: none"> ➤ Head power supply cable: 5.5 $\pm 0.1\text{m}$, $\phi 11\text{mm}$ ➤ Head control cable: 5.5 $\pm 0.1\text{m}$, $\phi 12\text{mm}$ | | | |
| Fiber cable | | 5 $\pm 0.2\text{m}$, $\phi 7\text{mm}$, minimum bend radius: 50mm | | | |
| Net weight | Head | $\approx 12\text{kg}$ | | | |
| | Controller | $\approx 28\text{kg}$ | $\approx 35\text{kg}$ | $\approx 28\text{kg}$ | $\approx 35\text{kg}$ |
| Degree of protection | | IP54 (IEC) (only for head section) | | | |

Dimensions

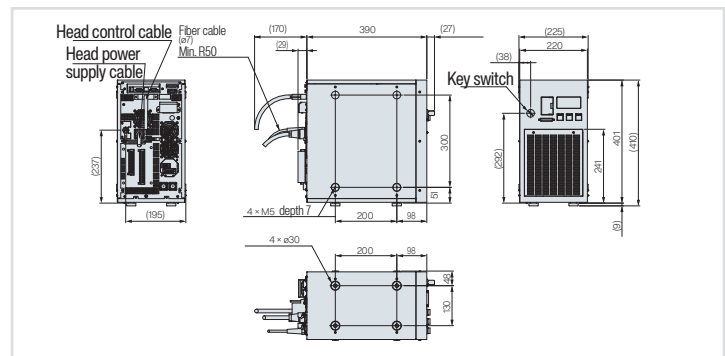
VL-W1 laser head



VL-W1500-N / VL-W1506-N controller



VL-W1A00-N / VL-W1A06-N controller



* All measurements in mm

