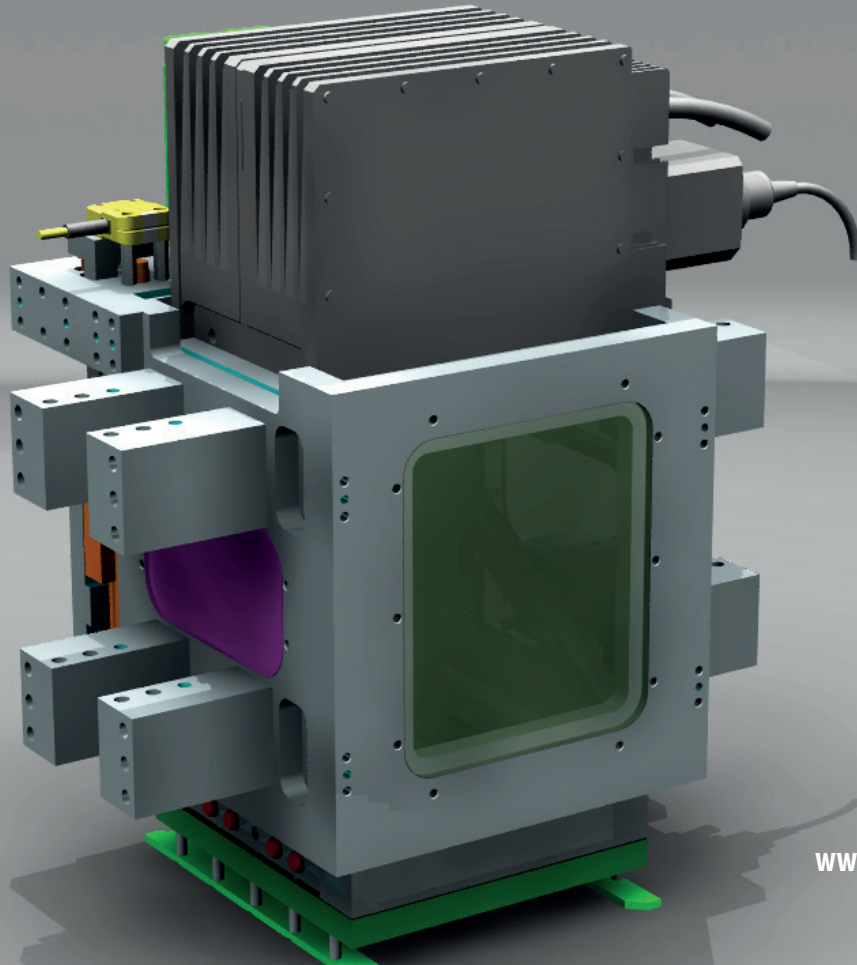


**Panasonic**

## Integration Module for VL-W1

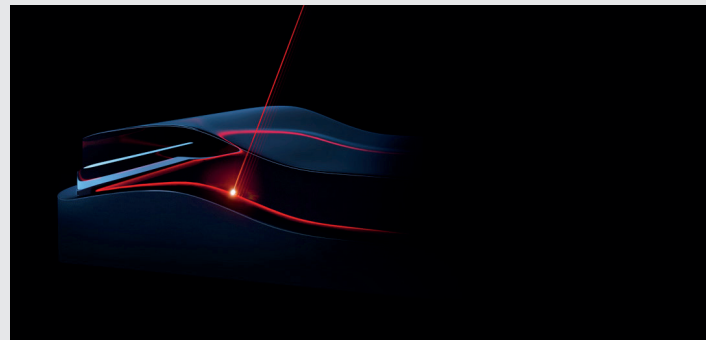


[www.laser.panasonic.eu](http://www.laser.panasonic.eu)

## LASER WELDING SYSTEM VL-W1 SERIES

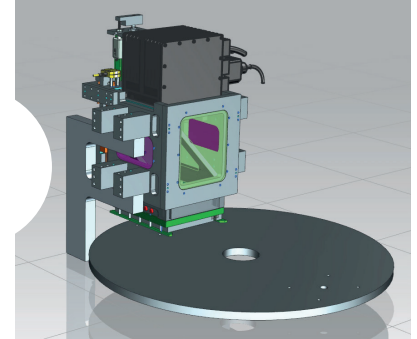
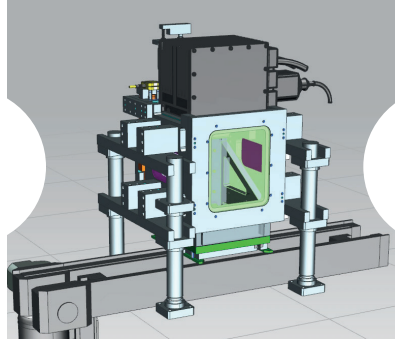
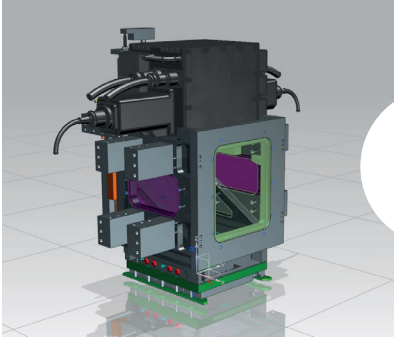


This integration module was designed especially for Panasonic's laser welding system VL-W1. It corresponds exactly to the dimensions and features of the laser welding system. This makes it easier for integrators and machine builders to implement the laser welding process for plastics into their production lines. The construction work and the risks that occur when a new process has to be integrated into an existing line are minimized by the I-Module for VL-W1.



# VL-W1 INTERGRATION MODULES

## Highlights:



### I-Module VL-W1

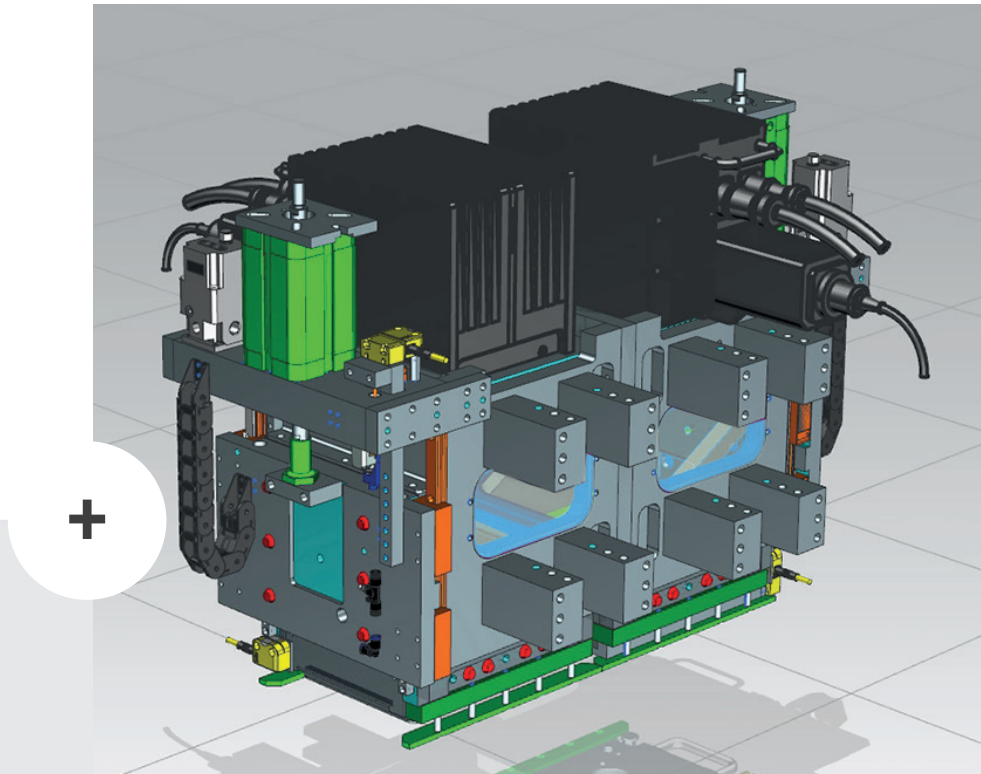
- › Large processing field (200x150mm)
- › Different clamping forces (pneumatic cylinders or servo-driven)
- › Forces from 400–3000N
- › Collapse control [Resolution: 0,003mm]
- › Options: Interlinkage for double-clamping, air-flow, camera, slide-in and coding for different tools
- › Laser-protected window

### I-Module VL-W1 with with conveyor belt or turntable solution

- › Different solution for conveyor belt, turntable and standalone
- › Customizing through integrator

<b>Manufacturer</b>	Panasonic
<b>Description</b>	Standardized integration module, adaptable by integrator, external electrical cabinet
<b>Processing field</b>	200x150mm
<b>Laser/cooling</b>	VL-W1
<b>Optics</b>	VL-W1
<b>Clamping force</b>	>200 – 3000N
<b>Double-clamping</b>	Yes, by connecting two modules

## Double-clamping combination



### **Panasonic Electric Works Europe AG**

Robert-Koch-Straße 100 · 85521 Ottobrunn  
Tel. +49 89 45354-1000 · Fax +49 89 45354-2111  
info.peweu@eu.panasonic.com  
www.panasonic-electric-works.com

# **Panasonic**<sup>®</sup>