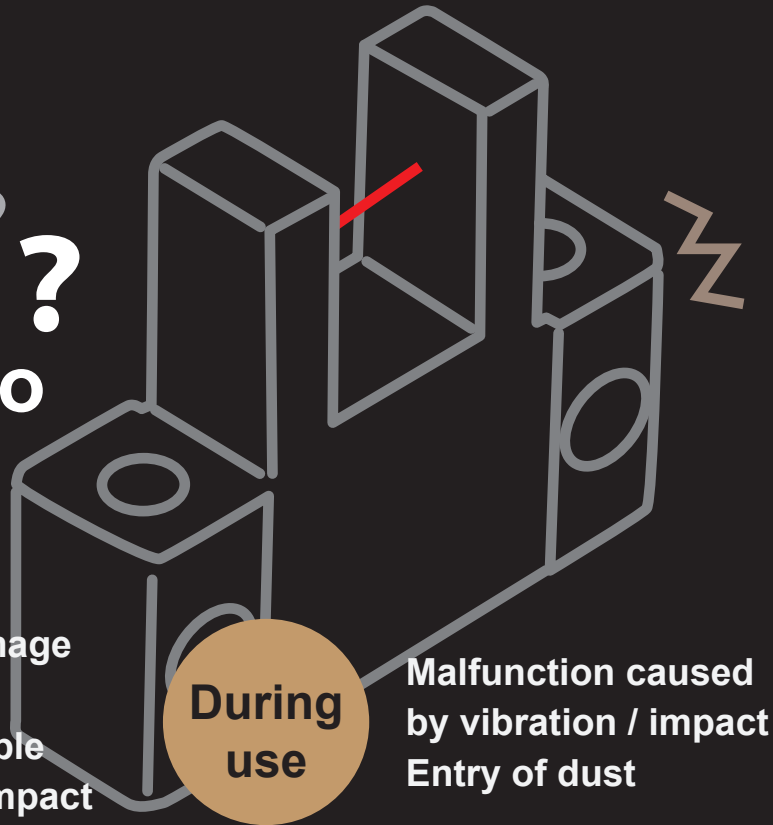


Panasonic

? Do you know the common causes of failures in micro photoelectric sensors? ? ?



During installation

Circuit board damage caused by stress applied by the cable
Accidental fall / impact

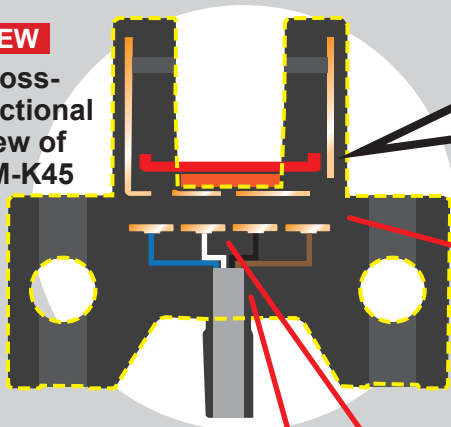
During use

Malfunction caused by vibration / impact
Entry of dust

Solve your problems with **Micro Photoelectric Sensor PM-25/45/65 series** featuring **integrated resin molding!**

NEW

Cross-sectional view of PM-K45



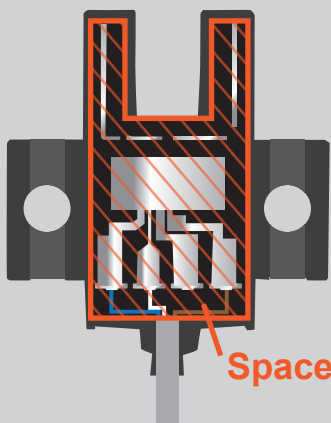
Held securely by **integrated resin molding**

Resistant to vibrations and impacts

Vibration resistance: 10 to 2,000 Hz frequency, 1.5 mm **0.059 in** double amplitude in X, Y and Z directions for two hours each

Shock resistance: 15,000 m/s² acceleration (1,500 G approx.) in X, Y and Z directions three times each

Cross-sectional view of previous model



Resistant to stress applied by the cable

The soldered section is positioned at the center of the sensor and molded with resin. In addition, the highly flexible cable is bendable to a radius of 5 mm **0.197 in** for easy handling, and also prevents wire breakage due to stress.

No entry of dust

Industry's first*! IP64 rating*

* As of March 2016. According to survey conducted by our company.

* Only for PM-25 and PM-45 series (cable type)
(Excludes PM-65 series with built-in connector)

You'll appreciate the difference when you use it!



Amplifier Built-in / U-shaped Micro Photoelectric Sensor

■ Ultra-small / Cable type **PM-25 SERIES** Easy mounting with M2 / M3 screws!



PM-K25

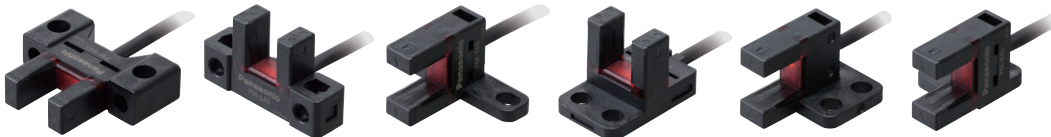
PM-L25

PM-F25

PM-R25

PM-U25

■ Compact / Cable type **PM-45 SERIES** Compact size!



PM-K45

PM-L45

PM-T45

PM-Y45

PM-F45

PM-R45

■ Compact / Connector built-in type **PM-65 SERIES** Easy connection with a single touch using commercially-available connectors



PM-K65

PM-L65

PM-T65

PM-T65W

PM-Y65

PM-F65



PM-R65

PM-F65W

PM-R65W

Three protection circuits standard on all models

IP64 rating

Ample beam emitting / receiving distance of 6 mm (0.236 in)

Beam marks for easy adjustment

Large and easy to see Multi-angle operation indicator

Compact size

All models easy to mount with M3 screws



Watch the video to see the features of the PM-25, PM-45 and PM-65 series.

Panasonic Micro Photoelectric Sensors

Please contact:

Panasonic Industrial Devices SUNX Co., Ltd.

2431-1 Ushiyama-cho, Kasugai-shi, Aichi, 486-0901, Japan
Global Sales Department

■ Telephone: +81-568-33-7861 ■ Facsimile: +81-568-33-8591
panasonic.net/id/pidsx/global

Panasonic®

All Rights Reserved ©Panasonic Industrial Devices SUNX Co., Ltd. 2016