

FP0H Upgrade Tool Operation Manual

[Applicable models]

FP0H C32T/P

FP0H C32ET/EP

Table of contents

1. How to Operate FP0H Upgrade Tool	1-1
1.1 How to Activate Upgrade Tool	1-2
1.2 Advance Preparation for Upgrade Tool.....	1-3
1.3 Communication Settings/Upgrade Mode Select.....	1-5
1.4 Upgrade Mode Check.....	1-8
1.5 Upgrade	1-9
1.6 Finish.....	1-11
 2. List of Error Messages	 2-1
2.1 Solution for Each Error Message	2-3

1

How to Operate FP0H Upgrade Tool

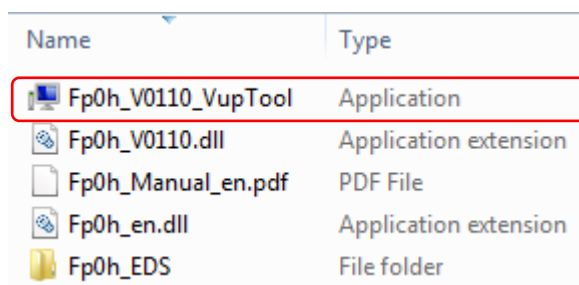
1.1 How to Activate Upgrade Tool

■ How to start

1. Unzip the file (FP0H_Vxxxx_en.zip) downloaded to a PC into a desired area.

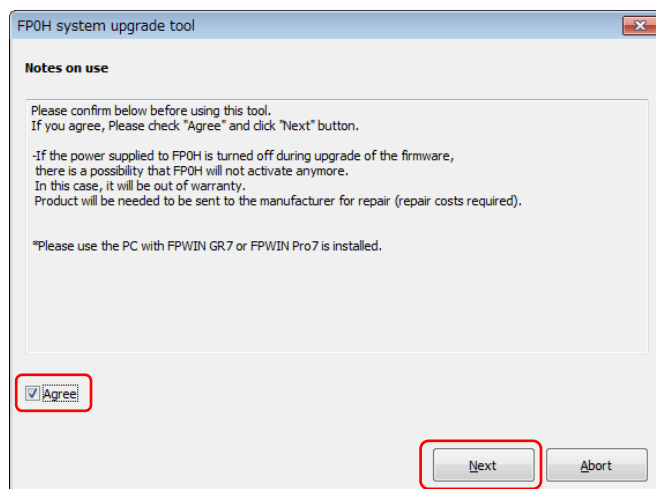
The following four files and one folder will be decompressed.

File name	Content
Fp0h_Vxxxx_VupTool.exe	: Upgrade tool startup module
Fp0h_Vxxxx_Vup.dll	: Upgrade tool FP0H DLL file
Fp0h_V1_en.dll	: Resource DLL file
Fp0h_V1_Manual_en.pdf	: Operation Manual PDF file
Fp0h_EDS	: FP0H EDS File folder



2. Execute the **upgrade tool startup module** (Fp0h_Vxxxx_VupTool.exe).

- The [upgrade tool](#) will be activated.
- The "Notes on use" will be displayed. After the confirmation, verify the box "Agree" and click the "Next" button.



1.2 Advance Preparation for Upgrade Tool

■ Advance preparation

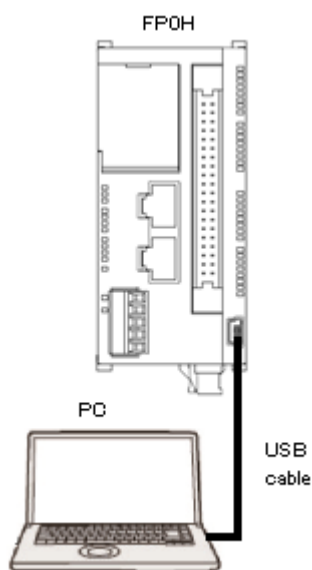
1. **Confirming applicable models:** Confirm if the FP0H you use is the applicable model for this tool.

- Applicable models: FP0H C32T/P
FP0H C32ET/EP

2. **Open the cover and change the switch on the FP0H to **PROG. mode**.**



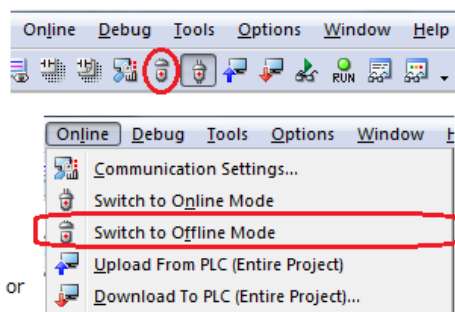
3. **Turn on the power to the FP0H and connect the USB cable to a PC. ***



* Do not connect more than one FP0H to one PC.

System requirements: OS (Windows10, Windows11)

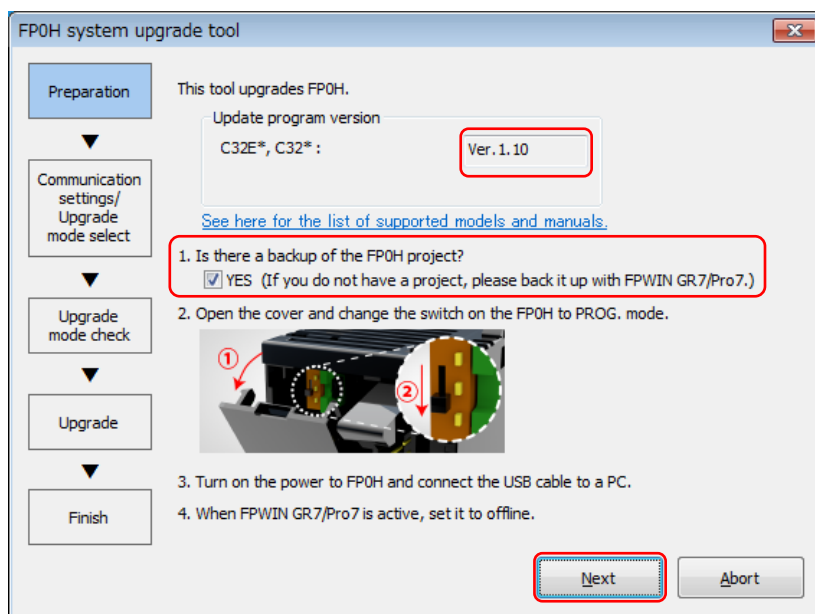
4. **When FPWIN GR7 is active, set it to **offline**.**



or

■ Advance preparation (Continuation of the above section)

After confirming the advance preparation (1 to 4), click the "Next" button.



Description of functions

Confirm in advance on this screen.

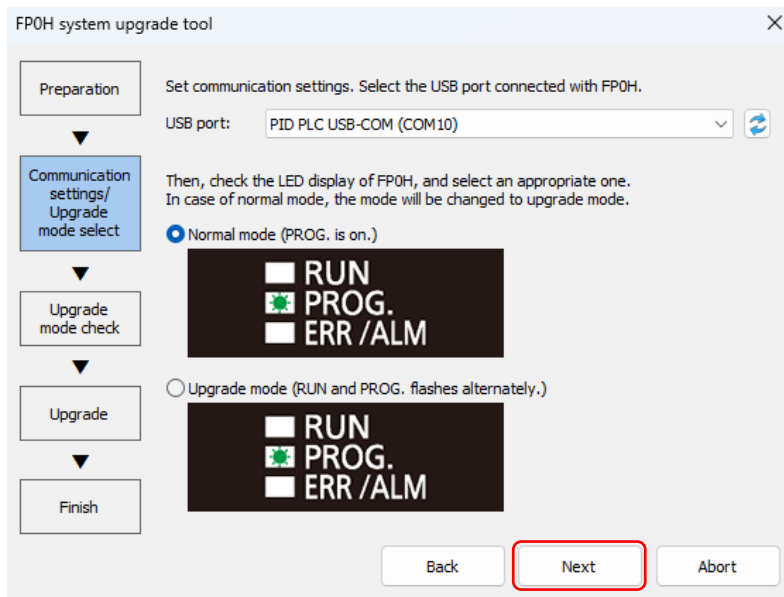
- Update program version: Indicates the update version made with this application.
The update version varies according to a provided update tool. (Screen sample: Ver.3.03)
When the version of the FP0H you use is the same, it is not necessary to update it.
- See here for the list of supported models and manuals: This manual is displayed.
- 1. Is there a backup of the FP0H project? : If you do not have a project, please back it up with FPWIN GR7/Pro7. Done the back up, please confirm the box "YES".

"Abort" button: Aborts and exits this application.

"Next" button: Goes to [1.3 Communication Settings/Upgrade Mode Select](#)

1.3 Communication Settings/Upgrade Mode Select

■ Communication settings/Upgrade mode select



Description of functions

The USB port setting and switching to the upgrade mode is made on this screen.

After selecting a USB port and the mode selection button, click the "Next" button.


- Communication settings

Select the USB port connected with the FP0H (*1 or *2).

- *1. When the USB port is automatically selected in the initial display, the USB port is recognized correctly, so the selection is not necessary.

(When more than one FP0H is connected, make only one connection available by turning off the power to the rest of the FP0H units or remove the cables.)

- *2. When the USB is not selected in the initial display;

As the FP0H is not recognized, reinsert the USB cable after turning on the power, and press the  "Update" button. (The USB port will be redisplayed.)

- Upgrade mode select

Compare the LED display on the FP0H to the screen, and select the operation mode.

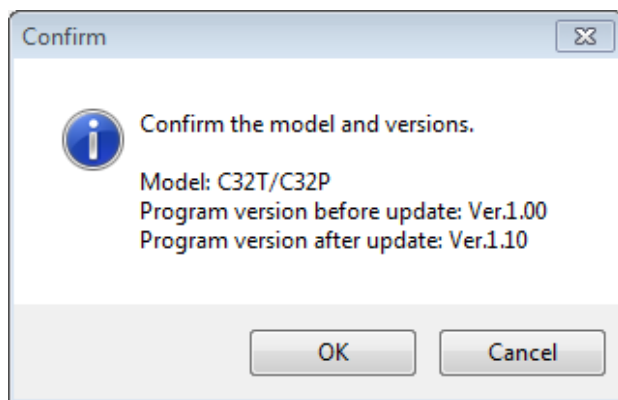
Normal mode: PROG. is on. → To Upgrade mode select *3

Upgrade mode: RUN and PROG. flashes alternately. → Upgrade

- *3. Note: The FP0H may be locked if "Normal mode" is selected in the upgrade mode. (In this case, the FP0H must be rebooted.)

■ **Communication settings/Upgrade mode select (Continuation of the above section)**

By clicking "Next" when "Normal mode" is selected, the connected PLC model and the version of the update program will be displayed.



When clicking "Cancel";

Returns to [1.3 Communication Settings/Upgrade Mode Select](#).

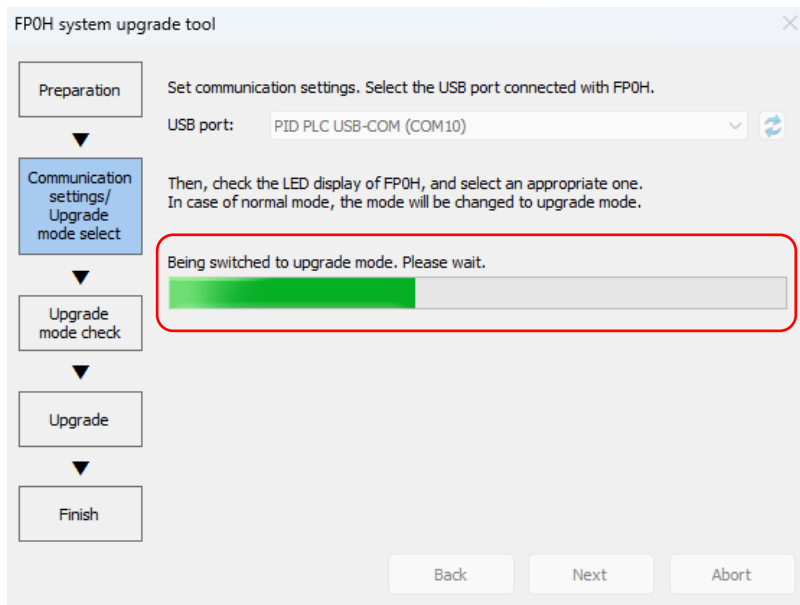
When clicking "OK";

The upgrade mode will be begun.

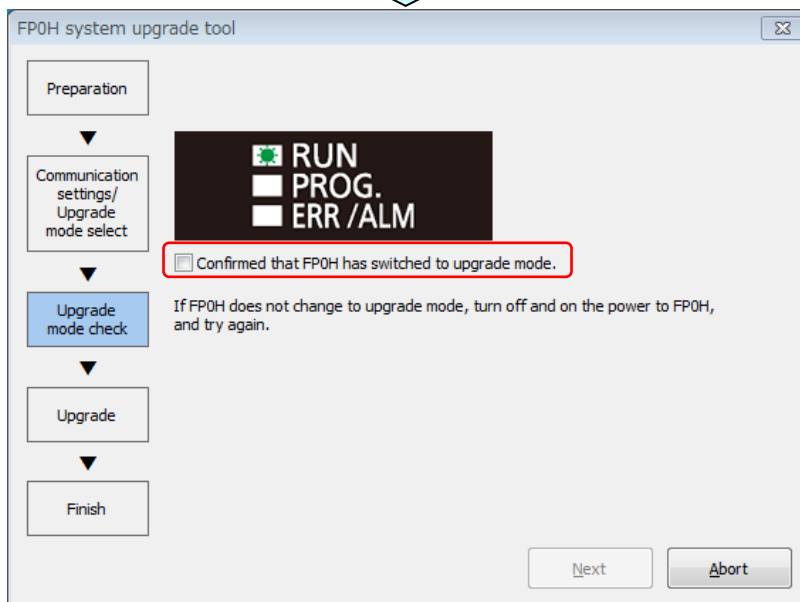
■ Communication settings/Upgrade mode select (Continuation of the above section)

By clicking "Next" when "Normal mode" is selected, changing the mode to the upgrade mode will start.

(After a short time, the screen will change to "Upgrade mode confirmation screen".)



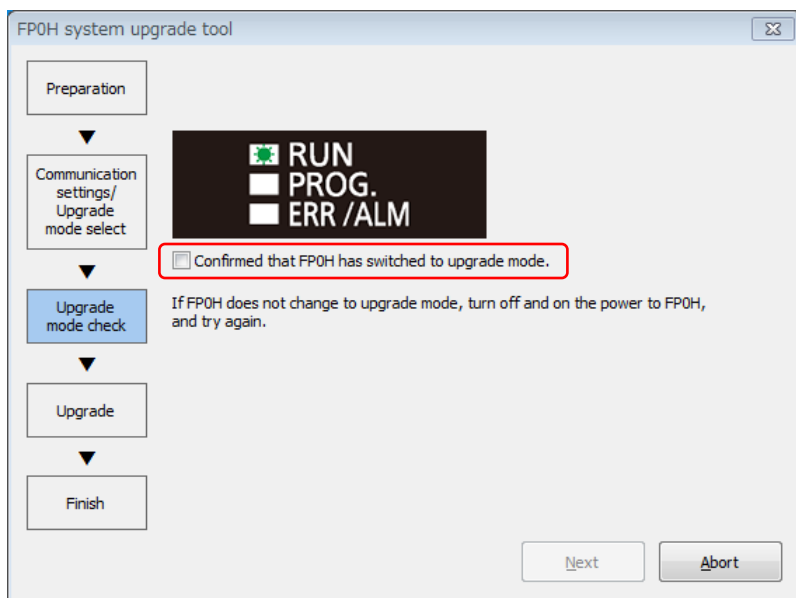
(The screen will change after a short time.)



Goes to [1.4 Upgrade Mode Check](#).

1.4 Upgrade Mode Check

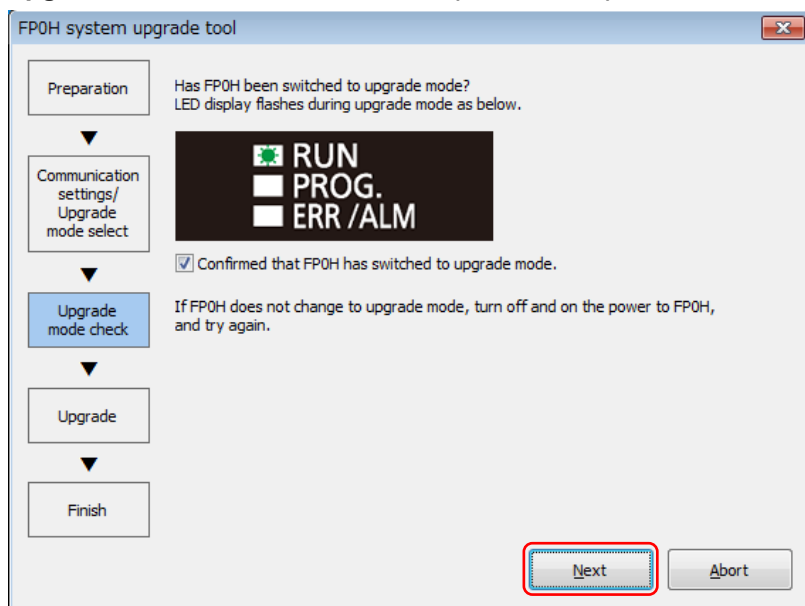
■ Upgrade mode check



Description of functions

Check if the mode has been changed from normal mode to upgrade mode on this screen. After checking that the LED display on the FP0H flashes just like the animation on the screen, check the checkbox and click the "Next" button.

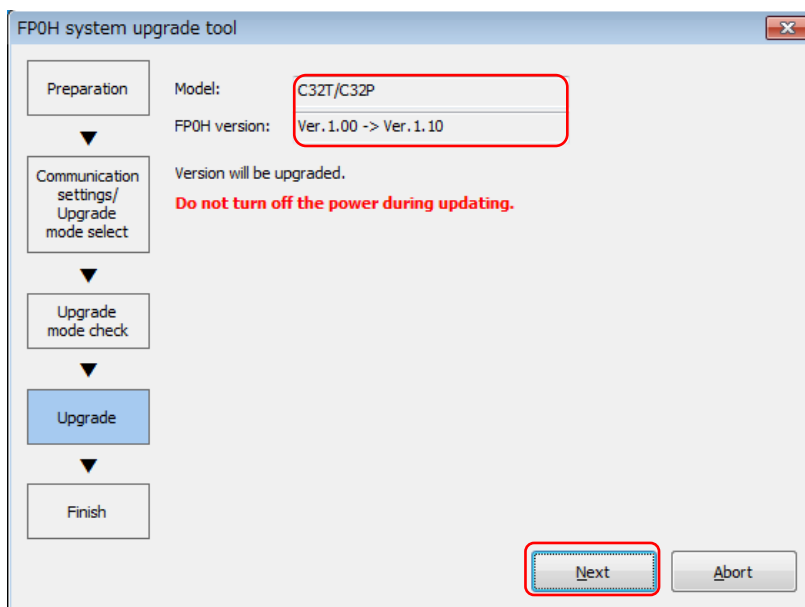
- Upgrade mode select confirmation (After check)



Goes to [1.5 Upgrade](#).

1.5 Upgrade

■ Upgrade



Description of functions

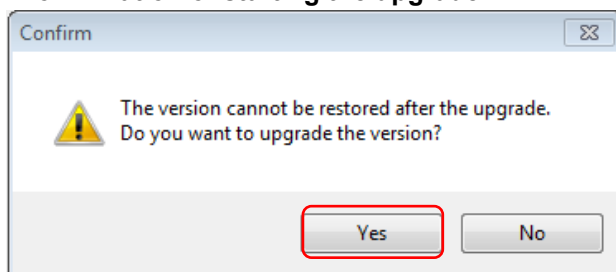
Confirm the current program version and execute the upgrade on this screen.

Confirm the current model and program version is correct.

(Display example: C32T/C32P Ver.1.00 → Ver.1.10)

After the confirmation, click the "Next" button.

■ Confirmation of starting the upgrade.

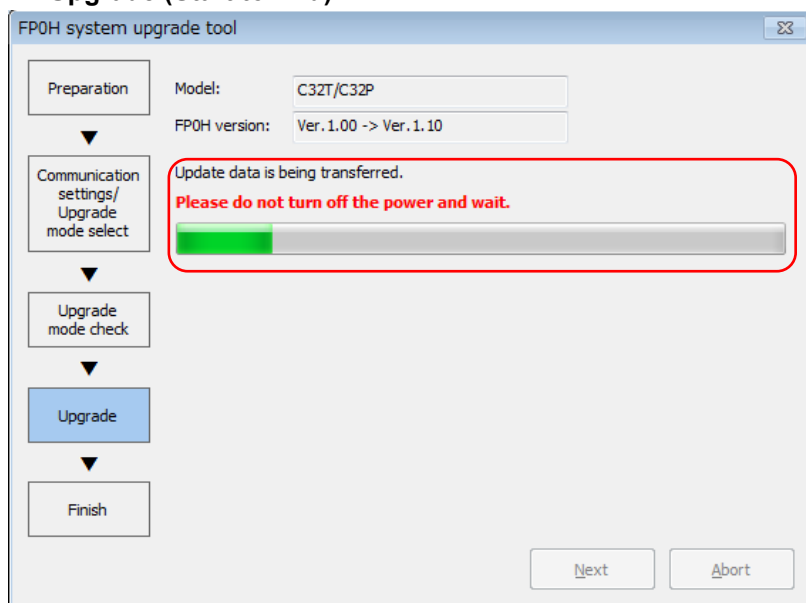


Confirm the message and click the "Yes" button. *

* The subsequent operation cannot be aborted. (Proceed with the operation carefully.)

Goes to [Upgrade \(Start to End\)](#)

■ Upgrade (Start to End)



The screen message changes as follows according to the progress.

(1) "Version will be upgraded. Do not turn off the power during updating."

↓ (Waiting for starting the upgrade)

(2) "Update data is being transferred. Please do not turn off the power and wait."

↓ (FP0H is transferring data.)

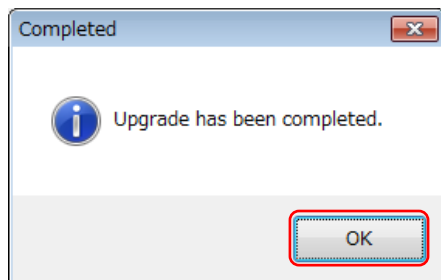
(3) "Firmware is being rewritten. Please do not turn off the power and wait."

↓ (FP0H is rewriting the firmware.)

(4) "Upgrade verification in progress"

↓ (FP0H is waiting for reboot and confirming the version.)

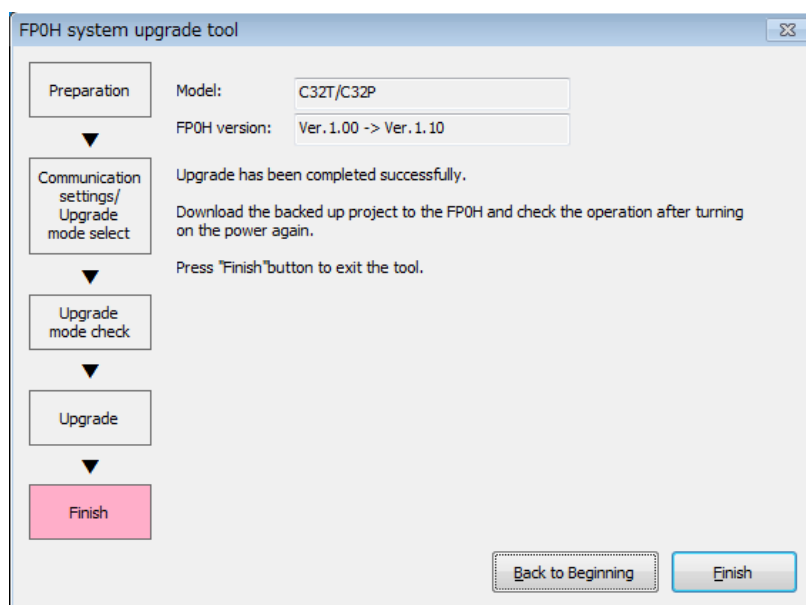
Completed.



Click the "OK" button to go to [1.6 Finish](#).

1.6 Finish

■ Finish



Description of functions

The upgrade operation has been completed. Click the "Finish" button to finish the operation.

For upgrade another FP0H, click the "Back to Beginning" button.

Goes to [1.2 Advance Preparation](#).

2

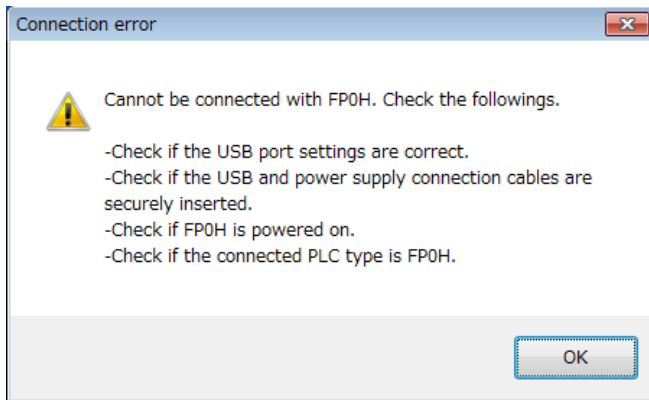
List of Error Messages

List of error and warning messages

Error title name	Screen	Cause
1) Connection error	Communication settings/Upgrade mode select	USB connection error
2) Connection error	Communication settings/Upgrade mode select	USB is being used.
3) Version upgrade not supported	Communication settings/Upgrade mode select	Unsupported model
4) Latest version	Communication settings/Upgrade mode select	The latest version already installed.
5) Failed in changing the upgrade mode	Communication settings/Upgrade mode select	Communication failure
6) Operation mode is incorrect	Communication settings/Upgrade mode select	RUN mode
7) Upgrade failed	Upgrade	Writing error
8) FP0H cannot be detected	Upgrade	USB reconnection error
9) FP0H multiple units connection error	Communication settings/Upgrade mode select	Multiple FP0H connections
10) RUN mode select confirmation	Communication settings/Upgrade mode select	RUN mode
11) Upgrade data error	None (At the initial startup)	Data error
12) Upgrade confirmed	Communication settings/Upgrade mode select	Confirmation of update target

2.1 Solution for Each Error Message

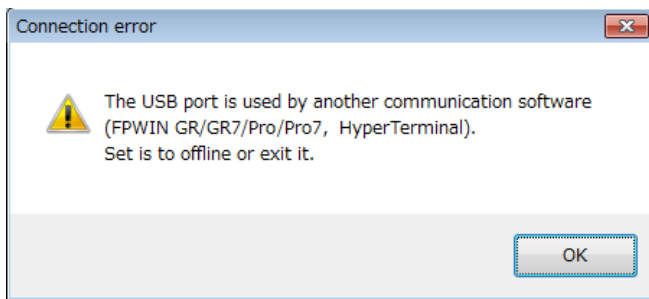
1). Error message (Connection error)



Solution

- Check if the USB port settings are correct. (Select the correct USB port.)
- Check if the USB and power supply connection cables are securely inserted.
- Check if the FP0H is powered on.
- Check if the connected PLC type is FP0H.

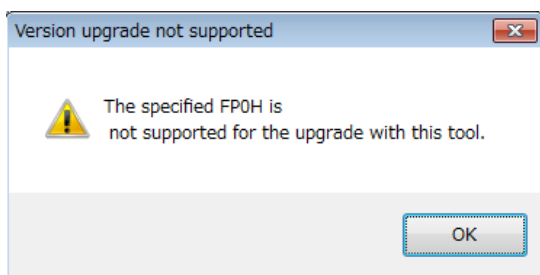
2). Error message (Connection error)



Solution

- The USB port is used by another communication software (FPWIN GR/GR7/Pro or HyperTerminal).
- Set it to offline or exit it.

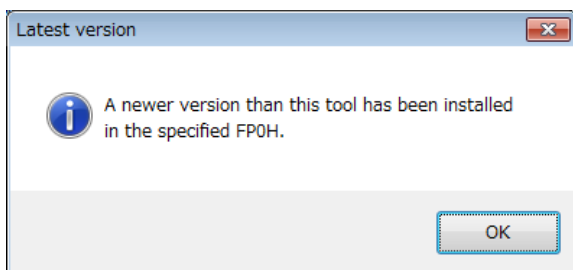
3). Error message (Version upgrade not supported)



Solution

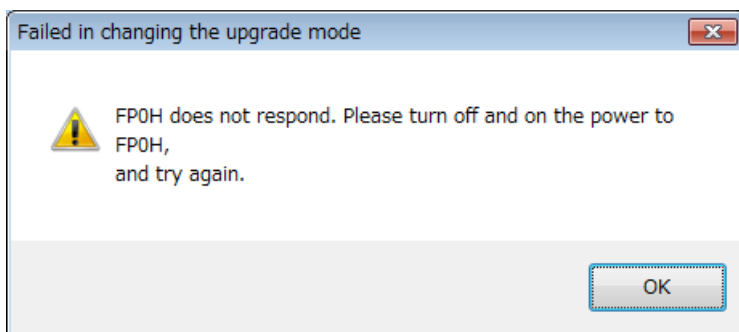
- The model used is not applicable for this tool. Use a supported model.

4). Warning message (Latest version)



Solution: None (The latest version has been already installed.)

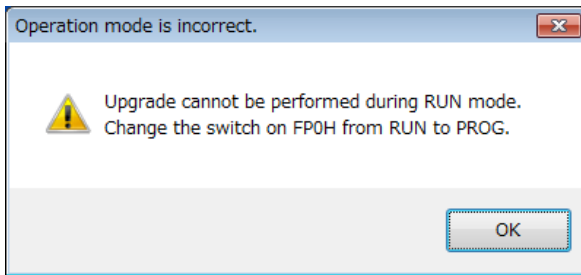
5). Error message (Failed in changing the upgrade mode.)



Solution

- Turn off the power to the FP0H and retry the upgrade from the beginning.

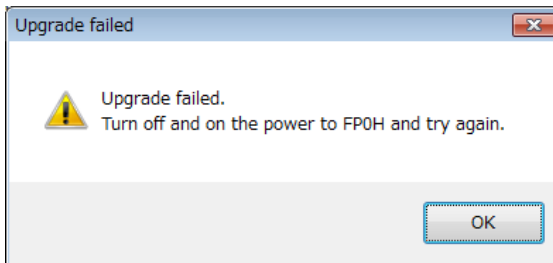
6). Error message (Operation mode is incorrect.)



Solution

- Change the switch on the FP0H to PROG.

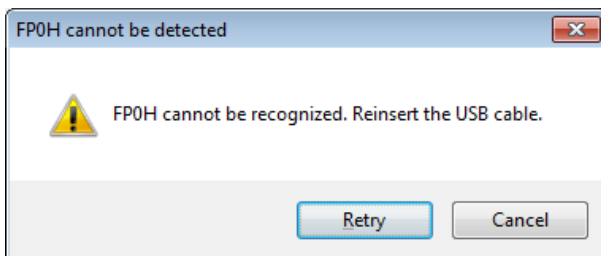
7). Error message (Upgrade failed)



Solution

Turn off the power to the FP0H and retry the upgrade from the beginning.

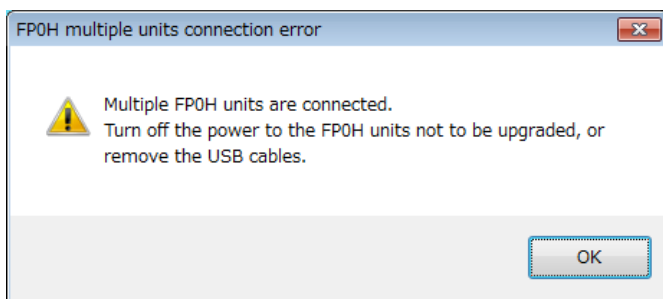
8). FP0H cannot be detected.



Solution

- Reinsert the USB cable and click the "Retry" button.

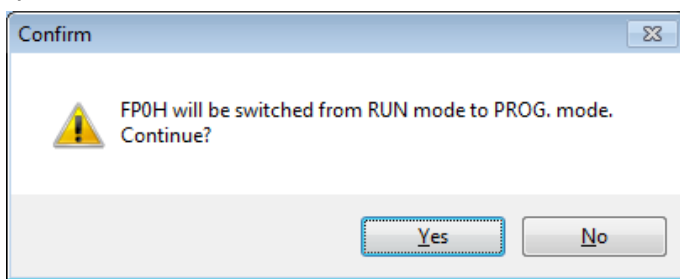
9). FP0H multiple units connection error



Solution

- Turn off the power to the FP0H units not to be upgraded, or remove the USB cables.

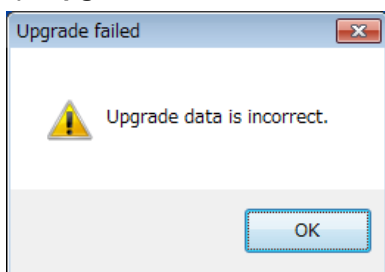
10). RUN mode select confirmation



Solution

- Click the "Yes" button. (The mode will be automatically changed to the PROG. mode in the software.)
- When the switch is changed manually, click the "No" button to proceed.

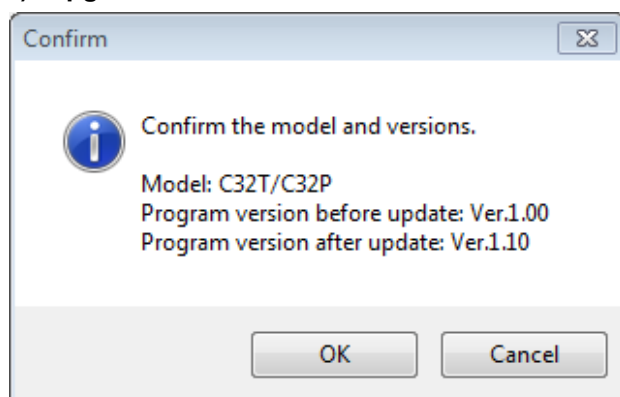
11). Upgrade data error



Solution

Please contact your dealer regarding upgrade data errors.

12). Upgrade confirmed



Solution

- Confirm the version of the update program of FP0H.
To start the update, click the "OK" button.
To cancel the update, click the "Cancel" button.

Record of changes

Manual No.	Date	Record of Changes
WUME-FP0HVUP-01	Apr. 2024	First Edition

Panasonic Industry Co., Ltd.

1006, Oaza Kadoma Kadoma-shi, Osaka 571-8506, Japan
<https://industry.panasonic.com/>

Please visit our website for inquiries and about our sales network.

© Panasonic Industry Co., Ltd. 2024

April, 2024

WUME-FP0HVUP-01