

# Motion Controller GM1 Firmware Version-up V.2.0.0.0

Information you need to know before using the software (Essential reading)

## About

Motion Controller GM1 Firmware Version-up file Ver1.6.0.1 is file to version-up GM1 Firmware to Ver1.6.0.1.  
Please version-up following the procedure in "How to Install".

## Caution

Be aware of the following points listed below.

This product incorporates the following software:

- (1) The software developed independently by or for Panasonic Industry Co., Ltd. ("Panasonic Industry")
- (2) The software owned by third party and licensed to Panasonic Holdings Corporation.
- (3) Software licensed under GNU General Public License Version 2.0 (GPL V2.0)
- (4) Software licensed under GNU Lesser General Public License Version 2.0 (LGPL V2.0) or Version 2.1 (LGPL V2.1)
- (5) Open-source software licensed on conditions other than those of GPL V2.0, LGPL V2.0, or LGPL V2.1

Please refer to the copyright notice of those individuals at following license terms.

## Conditions of Use

- Panasonic Corporation does not warrant anything regarding the use of this software.
- Panasonic Corporation will not assume responsibility of any sort for direct, indirect, repercussive, resulting or special damage that results from using this software or from the operation of the software itself.
- Panasonic Corporation does not restrict the use, copying or distribution of this software.
- However, when copying or distributing, Panasonic Corporation prohibits the procurement of fees other than the cost of media and prohibits the applying of restrictions in use of the software.

## How to Install

Make sure that the computer on which you intend to run the software meets the minimum specifications listed below.

The firmware update consists of two hex files.

### 1. Create a GM Programmer project.

Starting up GM Programmer, preparing project file to connect Motion Controller GM1 before version-up.

### Execute the Network Scan function and connect to the GM1.

### 2. Select Online>Unit Version Upgrade from the menu bar,

The "Unit Version Upgrade" dialog box appears.

### 3. Save .hex files to path for version update file

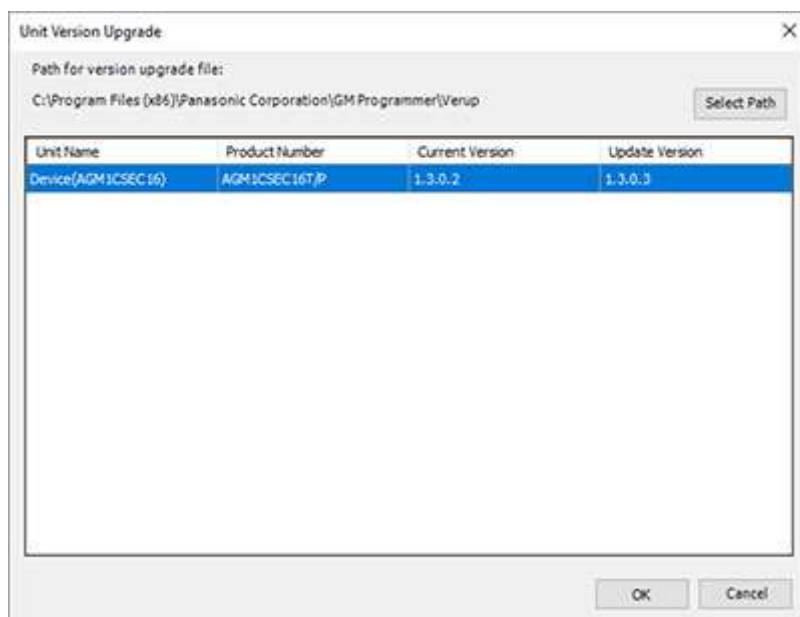
Administrator privileges is required to save files to the default path.

Click the [Select Path] button and specify a folder where .hex files are saved if you do not have administrator privileges.

#### 4. Execute Firmware Version-up.

Click [OK] button after selecting the version in the Update Version column to proceed firmware version-up.

For details on how to version-up firmware, refer to the GM1 Series User's Manual (Operation).



# GM1 Firmware Detailed Version-Up Information

---

## Version-Up Information (Ver.1.6.0.1 to Ver. 2.0.0.0) (Jan 13, 2026 update)

- Updated CODESYS.
- Expanded program capacity and variable capacity.

## Version-Up Information (Ver.1.6.0.0 to Ver. 1.6.0.1) (Jul 1, 2025 update)

- Fixed internal processing.

## Version-Up Information (Ver.1.5.0.0 to Ver. 1.6.0.0) (Jun 9, 2025 update)

- Supported SD card log storage function.

Corrected the following errors.

- Fixed error in power off servo after RTEX Home return.
- Fixed unable to write by RTEX\_WriteAmpParameter.
- Fixed received data error for Serial communication unit.
- Fixed error processing of expansion units (Digital input / output unit, Analog input / output unit and Pulse output unit) .

## Version-Up Information (Ver.1.4.0.1 to Ver. 1.5.0.0) (November 25, 2024 update)

- Added following models.
  - Serial Communication Unit
- Added error clear per RTEX axis.
- Fixed vulnerability CVE-2023-6357, JVN#97256167.

## Version-Up Information (Ver.1.4.0.0 to Ver. 1.4.0.1) (April 15, 2024 update)

Corrected the following errors.

- RETAIN and PERSISTENT variables error.

## Version-Up Information (Ver.1.3.0.3 to Ver. 1.4.0.0) (November 8, 2023 update)

- Expanded the maximum number of real axes for RTEX from 16 to 32 axes.
- Added MQTT client.
- Added DNS client.
- Added SNTP client.
- Added the project management function block.

Corrected the following errors.

- Fixed FTP server timestamp information to local time display.
- Improved starting Controller if expansion units are connected.  
Fixed Digital input / output unit, Analog input / output unit and Pulse output unit too.

## Version-Up Information (Ver.1.3.0.2 to Ver. 1.3.0.3) (June 21, 2023 update)

Corrected the following errors.

- Starting Controller may fails only if expansion units are connected.

## Version-Up Information (Ver.1.3.0.1 to Ver. 1.3.0.2) (February 1, 2023 update)

Corrected the following errors.

- Fixed a bug in the CNC function.

## Version-Up Information (Ver.1.3.0.0 to Ver. 1.3.0.1) (September 26, 2022 update)

Corrected the following errors.

- The motion task stops during error clear processing.

## Version-Up Information (Ver.1.2.0.0 to Ver. 1.3.0.0) (June 13, 2022 update)

- Added OPC UA server.
- Added the communication to display units. (Codesys V3 communication)

- Added FTP server.
- Added the project management. (SD backup and restore operating GM1 device directly)
- Added the setting of whether to write the IP address.

#### **Version-Up Information (Ver.1.0.1.0 to Ver. 1.2.0.0) (October 13, 2021 update)**

- Added following models.
  - GM1 Controller EtherCAT type
  - Digital output Unit(PNP)
  - Digital I/O Unit (PNP)
  - Analog input Unit
  - Analog output Unit
  - Pulse output Unit
- Supported firmware update by GM Programmer (USB/LAN).
- The operation mode of GM1 Controller RTEX type can be changed to RUN mode regardless of the running status of the MINAS.