

IN Your Future

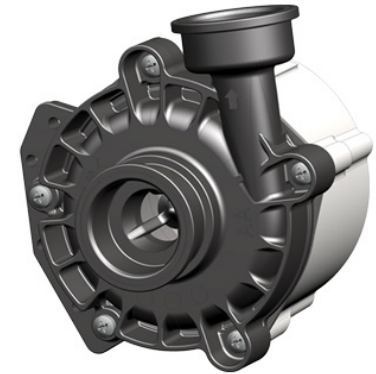


Pumps

Optimizing Heat Transfer Efficiency

Excellence in water circulating system

Pumps play a crucial role in regulating water flow and ensuring uniform thermal distribution. Despite their importance in heat transfer efficiency, they are often underappreciated. At Panasonic Industry, we use our technical expertise to select efficient and adaptable pumps. Our comprehensive analysis combines technical accuracy with system-wide considerations to optimize performance.



Key Features

- Environmentally Friendly Product
- Approximately 20% less power consumption than previous models
- Customer focus with local market support
- High efficiency with design and control optimization
- Low noise and low vibration
- Design for heat pump application
- Compact design, light weight



HVAC

- Heat Pumps

[Click here for more information](#)

Panasonic
INDUSTRY

Your Committed Enabler