

# IN Your Future

## 6 DoF Inertial Sensor

### 6 DoF Inertial Sensor

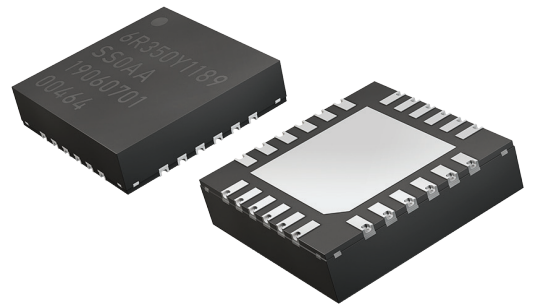
- > Product family: EWTS5G series

### Main features:

- > 6 DoF with ASIL-B(D) compliant
- > AEC-Q100 grade 1 qualified
- > Small package size

### USPs:

- > Less offset over lifetime (Gyro:  $\pm 2\text{mg}$ , Accel:  $\pm 50\text{mg}$ )
- > Temperature and vibration robustness
- > Small size with 6 DoF and safety for installation freedom
- > Less orthogonality error



Spec	EWTS5G version 2
Package size	4.5 * 4.5 * 1.1 mm
Operating temperature	-40 to +125 degC
Interface	SPI
Total offset	Gyro $\pm 2.0$ dps, Accel $\pm 50\text{mg}$
ASIL	ASIL-B(D)



### Markets:

- > Automotive
- > Personal mobilities
- > Industrial machineries



### Application

- > Passive safety
- > ADAS/AD
- > 3D motion detection
- > Curve detection
- > Applications used in harsh environment

### Would you like to know more?

ryosuke.toda@eu.panasonic.com

### URL:

<https://industry.panasonic.eu/products/components/sensors/6dof-inertial-sensor>

