

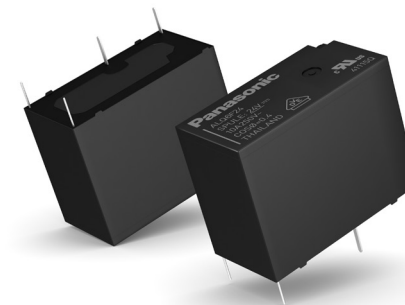
IN Your Future

High Inrush Power Relays

LQ Series

Improved High Inrush Current & Reinforced Insulation Type

The increasing degree of automation especially for motor or LED lighting control demands switching solutions with high inrush current capability. ALQ6 type, a member of the LQ relay family, can handle an inrush current up to 40A for 100 μ s for a capacitive load in the same small housing as the standard version. Moreover, ALQ6 offers increased creepage and clearance distance between contact and coil of minimum 5.5mm which helps to meet various safety standards.



Key Features

- Small size 20 x 10 x 16 mm
- 10A 125VAC, 8A 250VAC, 5A 30VDC
- 1FormA
- Capacitor load: Inrush 40A /100 μ s
- TV 3: Inrush 30A
- Motor load: Inrush 30A/0.5s
- Reinforced insulation between contact and coil \geq 5.5mm
- UL, C-UL, VDE approved



Building Automation

- Heating, cooling, ventilation
- Blinds
- Automatic doors



Lighting

- Street lighting
- Office lighting
- LED lamps control



Industrial

- Access control
- Pumps
- All kind of motor loads

 For further information, please contact relays@eu.panasonic.com

Panasonic
INDUSTRY

Your Committed Enabler