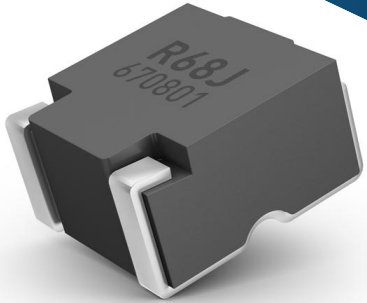


# Low Profile Power Choke Coil

## ETQP\*M\*\*\*KV\* series

**Panasonic**  
INDUSTRY



## High efficiency power inductors for automotive & industrial

The Low Profile series from our Power Choke Coil product family (PCC-LP) offers a wide range of case sizes (5x5mm to 10x10mm) and a wide inductance range (0.33 $\mu$ H to 68 $\mu$ H). By using proprietary metal composite magnetic material it offers “non-hard”-saturation characteristics against bias current. Compared with ferrite core type inductors power efficiency is much higher due to drastically reduced core losses and case sizes are up to 40% smaller with monolithic molded structure. Land patterns are compatible with comparable products available on the market.

## Key Features

- Low height, 4.0mm and 3.0mm max. height
- Inductance range of 0.33 $\mu$ H to 68 $\mu$ H 400mA Tx / 70mA Rx
- High current capability with low D.C. resistance, up to 29.3A / 2.2m $\Omega$
- Operating temperature -55 $^{\circ}$ C to +155 $^{\circ}$ C, up to +180 $^{\circ}$ C in a short time
- AEC-Q200 compatible
- Two independent manufacturing sites for secure supply
- High reliability (+155 $^{\circ}$ C x 2,000hrs)
- Up to 5MHz Switching frequency
- L\*W\*H; 5.5x5.0x3.0mm to 10.7x10.0x4.0mm



### Automotive Safety

- ADAS related application
- Camera systems
- Body control ECU



### Automotive Comfort

- Instrument Panel
- LED driver
- Navigation / Interface ECU



### Industrial Efficiency

- Collaboration Robots
- Factory Automation
- E-Mobility



For further Information, please contact [Inductor@eu.panasonic.com](mailto:Inductor@eu.panasonic.com)