

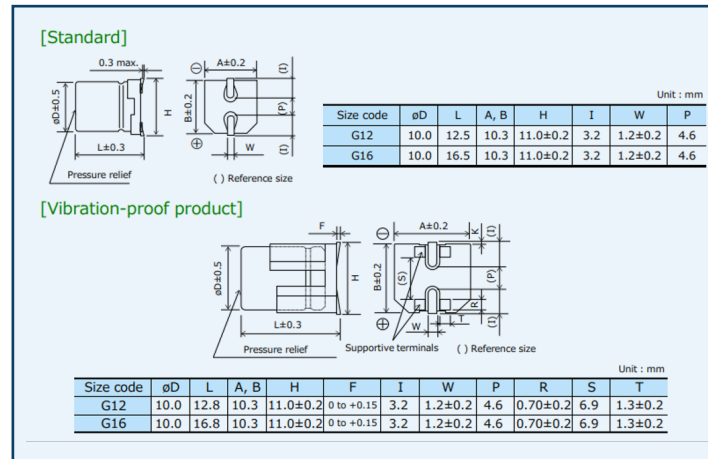
CONDUCTIVE POLYMER HYBRID ALUMINUM ELECTROLYTIC CAPACITORS

Panasonic
INDUSTRY

ZU-SERIES: SMD VARIANT IN HYBRID SUITABLE FOR HIGH TEMPERATURE AND HIGH RIPPLE CURRENT APPLICATION

ZU-Series Added Value

- Temperature range: -55°C to 135°C
- High capacitance: 100 to 560 μ F
- Ripple current ratings up to 5.8Arms (125°C)
- ESR as low as 8m Ω
- Size: \varnothing 10 x 12.5mm, \varnothing 10 x 16.5mm



Size/Specifications		Rated Voltage			
		25V	35V	50V	63V
\varnothing 10 x 12.5	Cap. [μ F]	470	330	150	100
	ESR [m Ω]	10	11	12	12
	Ripple [mA] @125°C/135°C	5000/3500	4800/3300	4600/3200	4600/3200
\varnothing 10 x 16.5	Cap. [μ F]	560	470	220	150
	ESR [m Ω]	8	9	10	10
	Ripple [mA] @125°C/135°C	5800/4000	5500/3800	5200/3600	5200/3600

CONDUCTIVE POLYMER HYBRID ALUMINUM ELECTROLYTIC CAPACITORS

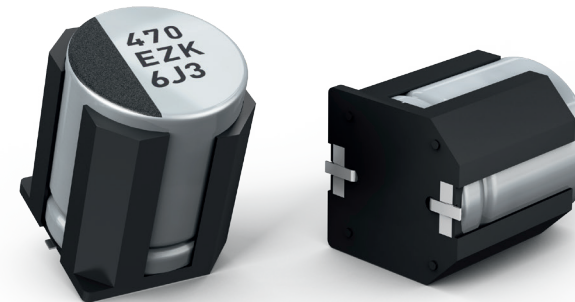
Panasonic
INDUSTRY

PRODUCT LINE-UP OF HYBRID CAPACITOR

	ZA	ZC	ZK	ZKU	ZT <small>NEW</small>	ZS	ZSU <small>NEW</small>	ZU <small>NEW</small>	ZE	ZF
Endurance	105°C 10,000h	125°C 4,000h	125°C 4,000h	125°C 4,000h	125°C 4,000h	125°C 4,000h	125°C 4,000h	125°C 4000h (135°C 4000h)	145°C 2,000h	150°C 1,000h
Rated Voltage [V DC]	25 – 80	25 – 80	25 – 35	25 – 35	25 – 63	25 – 63	25 – 63	25 – 63	25 – 63	25 – 63
Rated Capacitance [μ F]	10 – 330	10 – 330	33 – 470	39 – 560	33-330	150 – 560	120-1000	100-560	33 – 330	33 – 270
E S R [m Ω]	20 – 120	20 – 120	20 – 100	20 – 100	16-32	11 – 19	11 – 19	08 – 12	20 – 40	20 – 40
Ripple Current [Arms@Peak Temperature]	0.75 – 2.5	0.5 – 2	0.75 – 2.8	0.75 - 2.8	2.4-3.5	3.0-4.0	3.0-4.0	4.6-5.8 (3.2-4.0)	0.6 – 0.9	0.65 – 1
Leakage Current	0.01 CV									
Damp Heat	85°C 85% RH 2,000 h									

Anti-vibration SMD Capacitors

Specification	
Acceleration	294m/S ² (30G)
Frequency [Hz]	5~2000
Amplitude [mm]	max. 5 (peak to peak)
Direction and Duration of Vibration	X, Y, Z axes for 2 hours each



Panasonic Industry Europe GmbH
capacitor@eu.panasonic.com
industry.panasonic.eu

For complete and current
 Panasonic capacitor portfolio,
 please also visit industrial.panasonic.com