

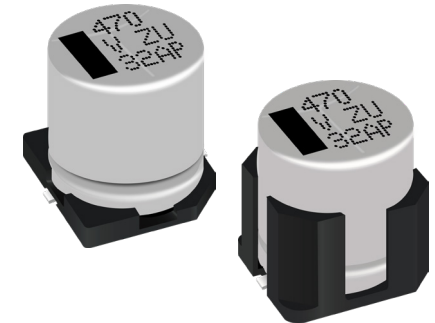
IN Your Future

Hybrid Capacitor

ZUU series

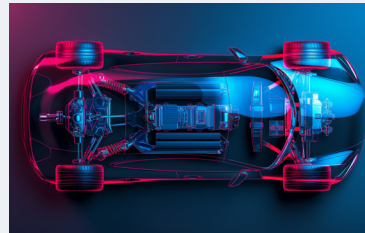
Highest Ripple Current and Lowest ESR with High Endurance Rating of 125°C / 135°C at 4,000 hours

Hybrid capacitor's ZUU series capacitors feature the highest ripple current handling capability up to 6.1 Arms at both 125°C and 135°C, together with largest capacitance up to 1000μF maximum and the low ESR down to 8mΩ. The ZUU series also exhibits extremely high endurance with 4,000 hours at both 125°C and 135°C. The use of the ZUU series capacitors can contribute to miniaturization on PCB area up to 40% by reducing the number of capacitors required on the PCB. The ZUU series is AEC-Q200 compliant and ideal for several "under the hood" automotive, telecommunications, industrial, and general power applications.



Key Features

- Rated voltage of 25 - 63VDC
- Endurance rating with double spec of 125°C 4000h and 135°C 4000h
- AEC-Q200 compliant
- High ripple current up to 6.1A
- Capacitance 120μF - 1000μF
- Best in class ESR down to 8mΩ
- Ultra low leakage current
- 30G vibration proof parts available



Automotive

- Electric Power Steering
- 48V Inverter ISG/BSG
- 48V E-compressor



Telecommunication

- DC/DC Converter
- AC/DC Converter
- Motor Inverter



Industrial/Power Supply

- DC side of Inverter circuit
- DC side of Rectifier circuit

[Click here for more information](#)

[Link to contact person or info](#)

Panasonic
INDUSTRY

Your Committed Enabler